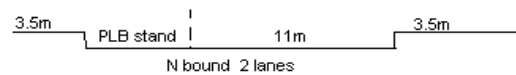
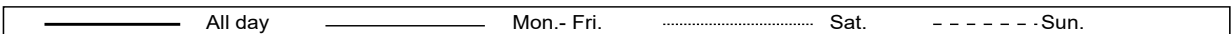
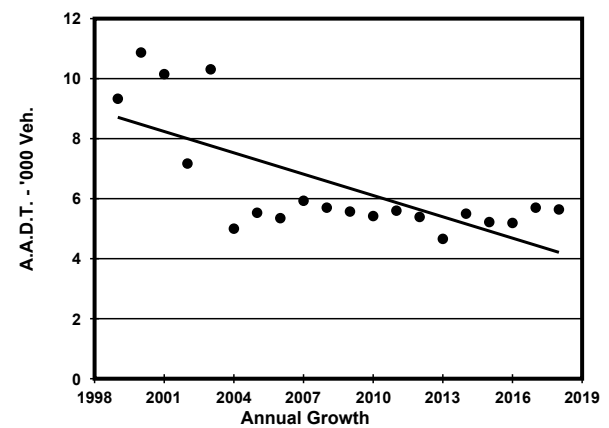
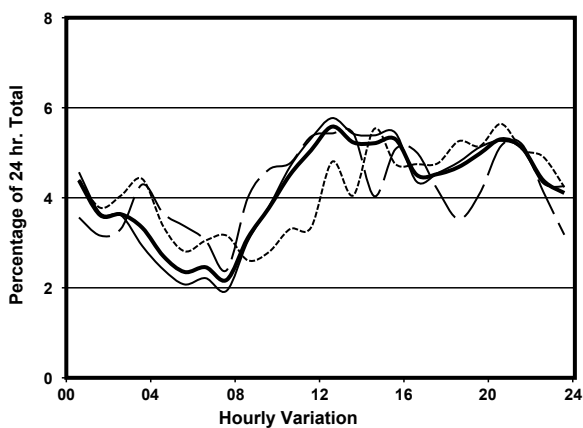
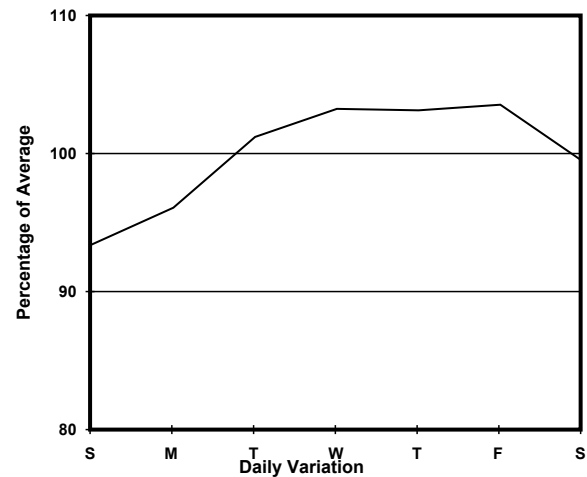
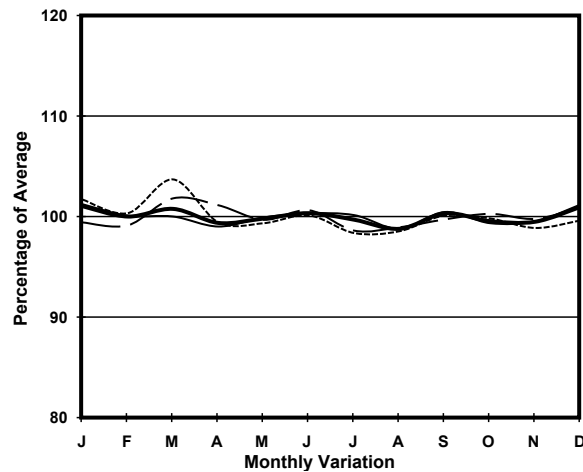


YEAR 2018
 COVERAGE (B) STATION 4404
 ROAD NETWORK MINOR
 ROAD TYPE LOCAL DISTRIBUTOR

LINK PORTLAND ST (from WATERLOO RD to ARGYLE ST)



1. TRAFFIC FLOW VARIATION AND GROWTH



2. TRAFFIC CHARACTERISTICS (BY DIRECTION)

| Parameter | All - Day | Mon. - Fri. | Sat. | Sun. |
|--------------------------------------|-----------|-------------|-----------|-----------|
| NORTH BOUND | | | | |
| A.A.D.T. | 5640 | 5740 | 5630 | 5280 |
| R 12 / 24 - % | 53.7 | 54.5 | 53.8 | 49.1 |
| R 16 / 24 - % | 73.4 | 74.3 | 72.4 | 69.9 |
| AM Peak Hour | 0900-1000 | 0900-1000 | 0900-1000 | 0700-0800 |
| One-way flow at AM peak hour | 210 | 220 | 260 | 170 |
| T - % (AM) | - | 4.5 | - | - |
| PM Peak Hour | 1800-1900 | 1800-1900 | 1600-1700 | 1800-1900 |
| One-way flow at PM peak hour | 260 | 280 | 280 | 280 |
| T - % (PM) | - | 1.8 | - | - |
| Prop.of commercial vehicles - 16 hr. | - | 2.3 | - | - |
| | | | | |
| A.A.D.T. | - | - | - | - |
| R 12 / 24 - % | - | - | - | - |
| R 16 / 24 - % | - | - | - | - |
| AM Peak Hour | - | - | - | - |
| One-way flow at AM peak hour | - | - | - | - |
| T - % (AM) | - | - | - | - |
| PM Peak Hour | - | - | - | - |
| One-way flow at PM peak hour | - | - | - | - |
| T - % (PM) | - | - | - | - |
| Prop.of commercial vehicles - 16 hr. | - | - | - | - |

3. OTHER INFORMATION AND COMMENT

4. Vehicle classification and occupancy - Monday to Friday

| Time | | Class of vehicle | | | | | | | | | |
|------------------------|-----|------------------|----------------|------|---------------|-----|------------|-------|----------------|---------|-----|
| | | Motor Cycle | Private Car | Taxi | Private LB | PLB | Goods veh. | | Non Fr. Bus | Fr. Bus | |
| | | | | | | | Light | M & H | | SD | DD |
| 0700-0800 | Pro | 0.0 | 37.5 | 16.7 | 0.0 | 0.0 | 45.8 | 0.0 | 0.0 | 0.0 | 0.0 |
| | Ocp | 0.0 | 1.2 | 2.5 | 0.0 | 0.0 | 1.3 | 0.0 | 0.0 | 0.0 | 0.0 |
| 0800-0900 | Pro | 0.0 | 44.4 | 38.9 | 0.0 | 0.0 | 11.1 | 5.6 | 0.0 | 0.0 | 0.0 |
| | Ocp | 0.0 | 1.4 | 1.7 | 0.0 | 0.0 | 1.0 | 2.0 | 0.0 | 0.0 | 0.0 |
| 0900-1000 | Pro | 0.0 | 27.3 | 22.7 | 0.0 | 0.0 | 45.5 | 4.5 | 0.0 | 0.0 | 0.0 |
| | Ocp | 0.0 | 1.6 | 2.1 | 0.0 | 0.0 | 1.4 | 2.0 | 0.0 | 0.0 | 0.0 |
| 1000-1100 | Pro | 3.2 | 16.1 | 35.5 | 0.0 | 0.0 | 43.5 | 0.0 | 1.6 | 0.0 | 0.0 |
| | Ocp | 1.0 | 1.3 | 1.6 | 0.0 | 0.0 | 1.4 | 0.0 | 1.0 | 0.0 | 0.0 |
| 1100-1200 | Pro | 1.6 | 21.0 | 40.3 | 0.0 | 0.0 | 32.3 | 3.2 | 1.6 | 0.0 | 0.0 |
| | Ocp | 1.0 | 1.3 | 1.8 | 0.0 | 0.0 | 1.4 | 2.0 | 1.0 | 0.0 | 0.0 |
| 1200-1300 Peak hour | Pro | 1.3 | 27.3 | 49.4 | 0.0 | 0.0 | 18.2 | 3.9 | 0.0 | 0.0 | 0.0 |
| | Ocp | 1.0 | 1.7 | 1.7 | 0.0 | 0.0 | 1.4 | 2.0 | 0.0 | 0.0 | 0.0 |
| 1300-1400 | Pro | 1.2 | 34.9 | 48.2 | 0.0 | 0.0 | 13.3 | 1.2 | 1.2 | 0.0 | 0.0 |
| | Ocp | 1.0 | 1.7 | 1.8 | 0.0 | 0.0 | 1.7 | 2.0 | 6.0 | 0.0 | 0.0 |
| 1400-1500 | Pro | 0.0 | 26.5 | 54.4 | 0.0 | 0.0 | 17.6 | 1.5 | 0.0 | 0.0 | 0.0 |
| | Ocp | 0.0 | 1.5 | 1.6 | 0.0 | 0.0 | 1.2 | 1.0 | 0.0 | 0.0 | 0.0 |
| 1500-1600 | Pro | 1.6 | 23.8 | 58.7 | 0.0 | 0.0 | 14.3 | 1.6 | 0.0 | 0.0 | 0.0 |
| | Ocp | 1.0 | 1.5 | 1.5 | 0.0 | 0.0 | 1.2 | 1.0 | 0.0 | 0.0 | 0.0 |
| 1600-1700 | Pro | 0.0 | 28.9 | 34.2 | 0.0 | 0.0 | 34.2 | 2.6 | 0.0 | 0.0 | 0.0 |
| | Ocp | 0.0 | 1.4 | 2.0 | 0.0 | 0.0 | 1.5 | 2.0 | 0.0 | 0.0 | 0.0 |
| 1700-1800 | Pro | 1.7 | 25.4 | 44.1 | 0.0 | 0.0 | 22.0 | 6.8 | 0.0 | 0.0 | 0.0 |
| | Ocp | 1.0 | 1.7 | 1.4 | 0.0 | 0.0 | 1.6 | 2.3 | 0.0 | 0.0 | 0.0 |
| 1800-1900 | Pro | 3.5 | 43.9 | 28.1 | 0.0 | 0.0 | 22.8 | 1.8 | 0.0 | 0.0 | 0.0 |
| | Ocp | 1.0 | 1.5 | 2.3 | 0.0 | 0.0 | 1.5 | 1.0 | 0.0 | 0.0 | 0.0 |
| 1900-2000 | Pro | 0.0 | 51.7 | 36.0 | 0.0 | 0.0 | 11.2 | 1.1 | 0.0 | 0.0 | 0.0 |
| | Ocp | 0.0 | 1.5 | 2.1 | 0.0 | 0.0 | 1.6 | 1.0 | 0.0 | 0.0 | 0.0 |
| 2000-2100 | Pro | 0.0 | 43.9 | 42.4 | 0.0 | 0.0 | 13.6 | 0.0 | 0.0 | 0.0 | 0.0 |
| | Ocp | 0.0 | 1.6 | 2.1 | 0.0 | 0.0 | 1.6 | 0.0 | 0.0 | 0.0 | 0.0 |
| 2100-2200 | Pro | 1.8 | 33.3 | 54.4 | 0.0 | 0.0 | 10.5 | 0.0 | 0.0 | 0.0 | 0.0 |
| | Ocp | 1.0 | 1.7 | 1.7 | 0.0 | 0.0 | 1.7 | 0.0 | 0.0 | 0.0 | 0.0 |
| 2200-2300 | Pro | 0.0 | 23.7 | 63.2 | 0.0 | 0.0 | 13.2 | 0.0 | 0.0 | 0.0 | 0.0 |
| | Ocp | 0.0 | 1.4 | 1.6 | 0.0 | 0.0 | 1.2 | 0.0 | 0.0 | 0.0 | 0.0 |
| 16 hours | Pro | 1.1 | 31.9 | 43.1 | 0.0 | 0.0 | 21.5 | 2.0 | 0.3 | 0.0 | 0.0 |
| | Ocp | 1.0 | 1.5 | 1.8 | 0.0 | 0.0 | 1.4 | 1.8 | 2.7 | 0.0 | 0.0 |

Legend

Pro. Proportion of vehicles in % (Sum may not add up to 100% due to figure rounding)*

Ocp. Average occupancy of vehicles including both driver and passengers*

M&H Medium and Heavy

***** All traffic data are collected from combined bounds except for one way traffic